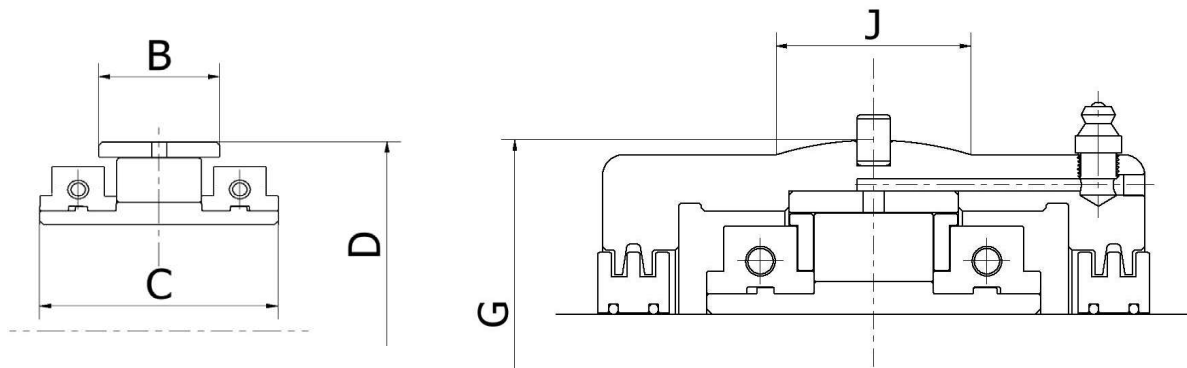


Product Range and Dimensions



Roller Bearings and Inner Housings (Cartridges)

Size Group	B (E7)	C	D Ø (H7)	Axial Float ref (i)	Inner Housing ref (ii)	G Ø (g6)	J	Inner Housing ref (iii)	G Ø (g6)	J
108	30	62.7	84.14	9	C1	100.00	25	-	-	-
200	32	63.7	98.42	10	C2	117.48	25	C2A	134.94	32
208	35	68.7	114.30	12	C3	134.94	32	C3A	157.16	38
300	40	78.7	133.35	12	C4	157.16	38	C4A	177.80	50
308	51	88.7	152.40	17	C5	177.80	50	C5A	203.20	50
400	59	94.7	174.62	17	C6	203.20	50	C6A	231.78	64
408	60	109.7	203.20	19	C7	231.78	64	C7A	266.70	76
500	71	116.7	222.25	20	C8	266.70	76	C8A	295.28	82
508	73	121.7	241.30	23	C9	279.40	76	C9A	323.85	90
600	73	121.7	254.00	23	C10	295.28	82	C10A	336.55	95

Ref (i) Total axial float. Maximum offset from centreline is half of this amount

Ref (ii) JHB Inner housings to match 'Light' or '01/E' series from other manufacturers

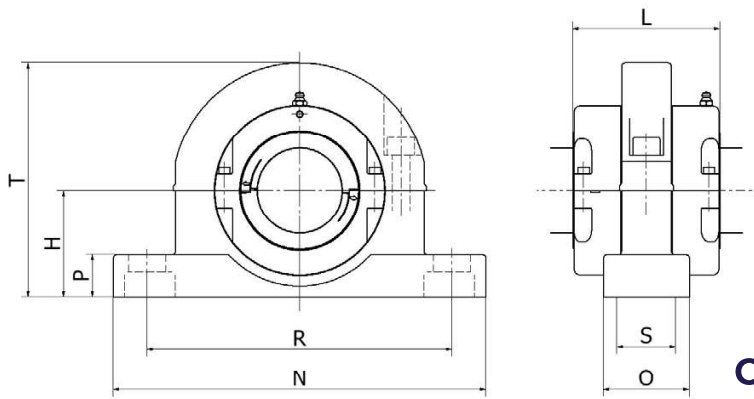
Ref (iii) JHB Inner housings to match 'Medium' or '02' series from other manufacturers

Notes:

- 1) Spherical diameter of corresponding outer housing requires G7 tolerance
- 2) Recess / abutment for inner race would require D11 tolerance on race width C
- 3) Recommended abutment diameter and shaft fillet radii:

For bearings up to and including 308 group: +5mm on shaft diameter and maximum 1.2mm fillet radii

For bearings from 400 to 600 group: +10mm on shaft diameter and maximum 2.0mm fillet radii



Outer Housings (Pedestals)

Equivalent to “Light” (SRB/Timken) or “01/E” (SKF Cooper) series

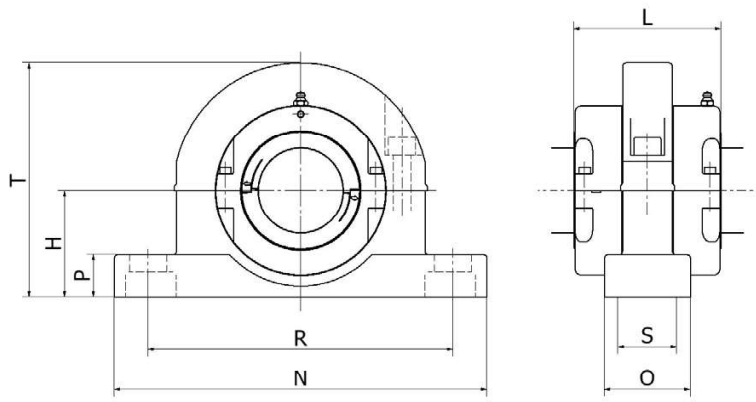
Size Group	H	R		S	Fixing Bolts	N	O	P	T	L	JHB Ref
		Min	Max								
108	60	172	192	-	Ø12	228	60	22	138	105	PED1
200	70	203	227	-	Ø16	270	60	25	158	106	PED2
208	80	226	242	-	Ø16	280	70	32	180	120	PED3
300	95	260	280	-	Ø20	330	76	38	208	131	PED4
308	112	312	328	-	Ø24	380	90	44	252	148	PED5
400	125	342	366	-	Ø24	420	102	52	272	154	PED6
408	143	374	410	-	Ø24	466	120	60	314	179	PED7
500	162	438	462	120	Ø24	508	178	38	372	191	PED8
508	181	470	494	120	Ø24	558	178	41	405	198	PED9
600	181	484	508	120	Ø24	558	178	41	415	208	PED10

Notes:

- 1) Overall length (L) is taken over seals
- 2) Pedestal design shown for representation only

Component Weights (kg)

Size Group	Free Bearing	Fixed Bearing	Inner Housing	Pedestal
108	1.63	1.76	2.00	3.00
200	2.08	2.29	2.80	4.00
208	2.86	3.19	3.80	6.50
300	4.18	4.61	5.70	9.00
308	6.41	7.09	7.30	16.00
400	8.94	9.83	10.20	18.50
408	13.55	14.85	15.80	25.50
500	17.73	19.21	26.90	45.00
508	21.09	23.11	27.60	58.00
600	22.85	25.00	33.10	59.20



Equivalent to “Medium” (SRB/Timken) or “02” (SKF Cooper) series

Size Group	H	R		S	Fixing Bolts	N	O	P	T	L	JHB Ref
		Min	Max								
200	80	226	242	-	Ø16	280	70	32	180	106	PED3
208	95	260	280	-	Ø20	330	76	38	208	120	PED4
300	112	312	328	-	Ø24	380	90	44	252	131	PED5
308	125	342	366	-	Ø24	420	102	52	272	148	PED6
400	143	374	410	-	Ø24	466	120	60	314	154	PED7
408	162	438	462	120	Ø24	508	178	38	372	179	PED8
500	181	484	508	120	Ø24	558	178	41	415	191	PED10
508	203	534	558	120	Ø24	610	178	51	460	198	PED9A
600	210	546	570	128	Ø24	636	204	50	470	208	PED10A

Notes:

- 1) Overall length (L) is taken over seals
- 2) Pedestal design shown for representation only

Component Weights (kg)

Size Group	Free Bearing	Fixed Bearing	Inner Housing	Pedestal
200	2.08	2.29	5.2	6.50
208	2.86	3.19	7.9	9.00
300	4.18	4.61	10.1	16.00
308	6.41	7.09	15.2	18.50
400	8.94	9.83	29.8	25.50
408	13.55	14.85	31.9	45.00
500	17.73	19.21	43.4	59.20
508	21.09	23.11	55.8	84.00
600	22.85	25.00	61.8	97.60