



ANTIMU
ENGINEERING
COMPANY PVT. LTD.



Lifting and Transport Equipment from **JUNG - Germany**

JUNG a name that signifies quality and innovation, when it comes to transporting heavy loads in easier, safer and more ergonomic ways.

These made in Germany products, offer best suitable equipment and solutions for every application, however unique.

Products are highly ergonomically designed to give long maintenance free service with minimum of efforts. The products are sold in India by Antimu Engineering Co. Pvt. Ltd. who have a proven and established track record for being a committed service provider.

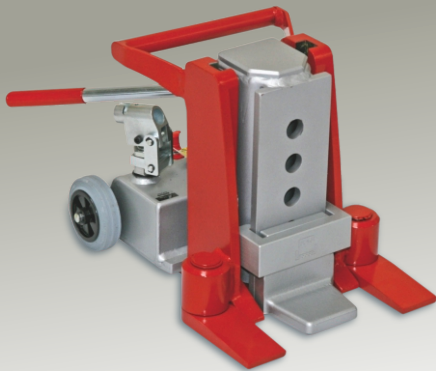
Hydraulic Jacks:

The innovative light, compact and strong jacks come in different series for specific needs.



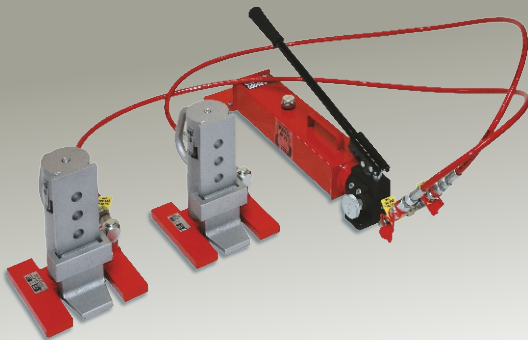
Jacks Series JH-G plus EX (from 10 tons to 30 tons)

- Integrated spring return retracts piston automatically on JH 15 up to JH 30 G plus EX. For using these jacks, a separate pump & hose is required.
- Slide shoe design inside the guiding track prevents twisting of the piston inside the lifting cylinder. This guarantees better force distribution, less friction and reduced wear compared to conventional jacks.
- Reduced maintenance costs due to removable stroke unit and easy to change slide shoes.
- Extremely lightweight with high performance due to the use of high quality material and innovative design.
- Continuous adjustment to the load due to swivelling safety toe.
- Secure stability in every situation even in lifted position.



Jacks Series JH-G plus : with integrated pump unit, for loads from 6 tons to 20 metric tons

- Slide shoe design inside the guiding track prevents twisting of the piston inside the lifting cylinder. This guarantees better force distribution, less friction and reduced wear compared to conventional jacks
- Reduced maintenance costs due to easy to change slide shoes and removable pump unit.
- Extremely lightweight with high performance due to the use of high quality material and innovative design.
- Continuous adjustment to the load due to swivelling safety toe. Secure stability in every situation even in lifted position.



Hydraulic Jack Sets – JHS for loads up to 20 metric tons

- Safe: because of the use of a separate pump and hoses, more safety distance to the load.
- 180° revolving housing, this allows the jack to be placed with long or with short feet to the load, if there is no space under that.
- High capacity at low weight.
- Pump unit separated from jack, flexible use, ideal also for confined spaces, also operates in horizontal position.



Pressure block JD 40E+VS series with a push back system

- Synchronized lifting of multiple jacks. For loads with decentralized center of gravity. Simple and safe.
- Uncomplicated operation via push button (remote control).
- All slave-cylinders equipped with 520 bar safety pressure switches. Controls monitor pressure switches with LED indicator preventing any possible overloading.
- Retracting of the hydraulic jacks also without load (JH 15 - 20 G plus EX).
- Load independent, maintains constant lifting speed.

Trolleys: All trolleys use high quality castors with precision ball bearings and extremely durable coating. The connecting bars guarantee alignment of rollers even in curves. Steerable trolleys are equipped with ball bearing supported turn table. Further steel clasps on these trolleys make them very convenient for loading and unloading from/into vehicles.



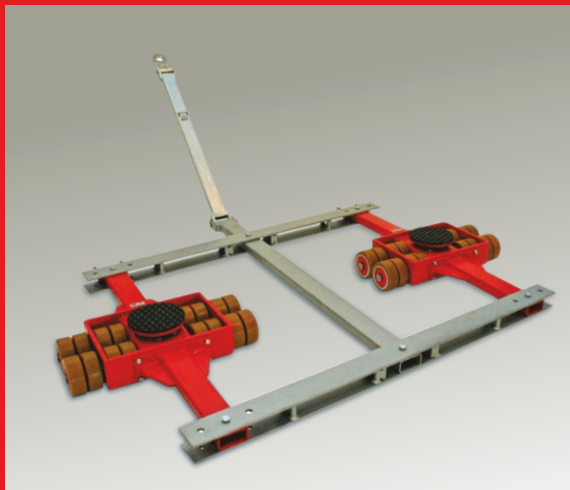
Revolving transport trolleys JKB for loads up to 15 metric tons, height 110 mm

- Optional connecting bars can be fixed without tools by clamping down on handle.
- High load capacity at low weight.
- Bearing supported swivelling rollers allow 360° manoeuvrability.
- Same height trolleys provide interchangeability. Mix and match revolving trolleys with series 'K' transport trolleys.
- All products are also available in a set



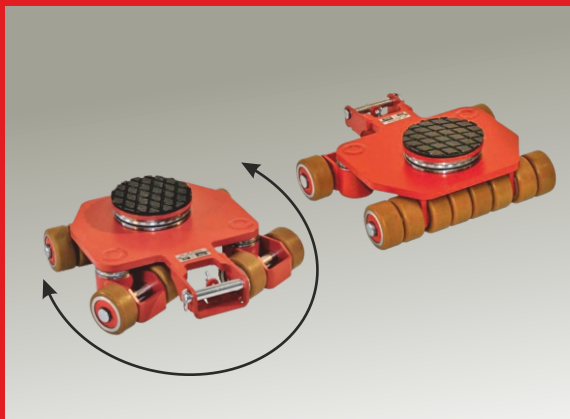
Transport trolleys series K professional : for loads up to 28 metric tons, height 110 mm

- Galvanized axles and safety clip rings for improved protection against corrosion.
- The double roller design results in dramatically easier steering due to reduced friction forces in curves. The much lower friction resistance also causes the rollers on the rear axis to follow in a truer course.
- All transport trolleys are ready for use: the steerable transport trolley is fitted with a ball bearing supported turntable and a handlebar (as shown in picture).
- Non-marking support wheels.
- The Series 'K' handlebars are also available with a removable handle.



Tandem trolleys series K: for loads up to 14 metric tons, height 110 mm

- Tandem transport trolley for loads with no leading or trailing edge center support.
- Galvanized axles and safety clip rings for improved protection against corrosion.
- The double roller design results in dramatically easier steering due to reduced friction forces in curves. The much lower friction resistance also causes the rollers on the rear axis to following in directional stability.
- Ready for use: 2 interconnected steerable trolleys with 2 handlebars and two tandem connecting bars.
- Multi-purpose use: Also useable as two single trolleys, each with half of the combined load capacity. No additional accessories needed.



Multi-purpose trolleys series M: for loads up to 15 metric tons, height 150 mm

- Combined leading swivelling rollers with trailing rigid rollers. Swivelling lead-casters make steering easier by up to 80 %.
- Ergonomic: reduces handling effort for user.
- Better directional stability on long straight-line paths with trailing rigid rollers.
- Each trolley can be used for either steerable or straight-line movements.
- Extreme manoeuvrability with thrust bearing supported, anti-slip turntable.
- Trolleys can be used as steerable, adjustable or tandem trolley.

Apart from these many other variants like series 'S', series 'G' professional, series 'H', Air powered trolleys, Electric powered trolleys etc. are available to suit diverse needs. JUNG specialists will be able to advise the correct trolley for a specific application.

Other Products:



Hydraulic Pumps and Accessories :

(from 10 tons to 30 tons)

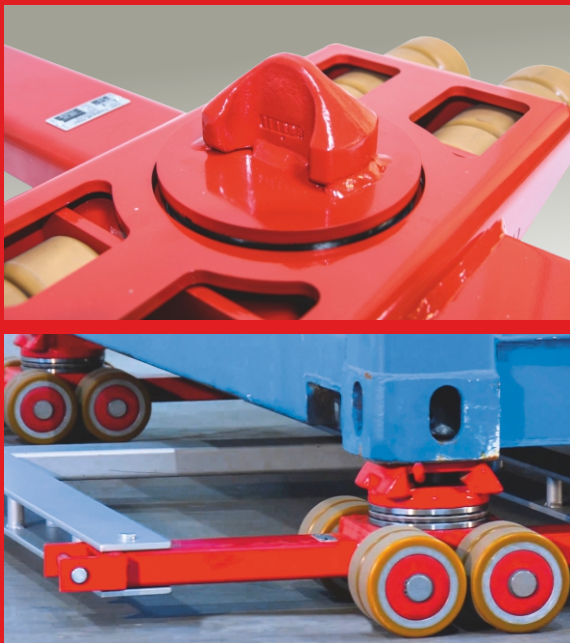
- Series JP, JPE and JPL variety of hydraulic pumps, either manual, air operated or electric are available for different needs.
- The pumps develop pressure up to 520 bar with Air-Hydraulic pumps going up to 700 bar
- Along with high quality hoses, pressure gauges, handles etc they complete the assembly requirements.



Hydro-transporter:

for loads up to 3.8 tons

- Hydro-Transporter are ideal for moving cabinets, safes, boxes or machines.
- They are easy and safe in use. One transporter consists of 2 transport units and a belt to connect. The transport units are attached on the sides of the load and connected with the standard belt.
- While pumping up the movable part of the transporter on both sides the load is lifted and ready for moving.
- Steering can be done by the top link bars on each unit, connected with the big wheels equipped with ball bearings. The linkage guarantees that the wheels are always in parallel direction.



Twistlock / "Weld-on Cone"

for transporting containers up to 60 metric tons, height 180 mm and 300 mm

- Safe transport of containers.
- Low height for moving containers low to the ground.
- Lock-to-hold mechanism between the trolley and the containers (Twistlock) or just form-fitting-hold (Weld-on Cone System).
- Compatible with all ISO-containers.
- "Weld-on Cone" version for indoor container transport on smooth floors includes turntables fitted with cones and 2-parts container-wide connecting bars fixed length 2.26 m / 89 inches; including a pulling handle with towing eye.
- "Twistlock" version for outdoor transport for use on pavement includes turntables fitted with "Twistlock" to secure containers to transport trolleys. Including 2-parts connecting bars fixed length 2.26 m / 89 inch and pulling handle with towing eye.

Authorized Distributor in India



**ANTIMU
ENGINEERING
COMPANY PVT. LTD.**

103-A Hiren Industrial Estate,
Mogal Lane, Mahim, Mumbai - 400 016
Tel.: 022-2446 0800, 2444 2204, 2444 1146
E-mail : sales2@antimu.com / info@antimu.com
Web : www.antimu.com